

# OKAYAMA JAPAN 日本岡山



Okayama,  
Home of Momotaro  
桃太郎の故郷  
日本岡山

For information, please contact: 詢問處

Tourism Division Okayama Prefecture Government

岡山縣產業労働部観光課

2-4-6 Uchisange, Kita-ku, Okayama City, Okayama 700-8570

郵遞區號700-8570 岡山市北區內山下2-4-6

Tel.+81-86-226-7383 Fax.+81-86-224-2130

E-MAIL kanko@pref.okayama.lg.jp

If you would like to make an inquiry in a language other than Japanese, we would appreciate receiving it via email.  
日語以外的詢問,請以電子郵件聯繫。

## Okayama Prefecture Official Tourism Guide

岡山縣官方觀光導覽

[English]



[简体字]



[繁體字]



[한국어]



[ภาษาไทย]



[Français]



[Deutsch]



<https://www.okayama-japan.jp/en/> <https://www.okayama-japan.jp/cn/> <https://www.okayama-japan.jp/tw/> <https://www.okayama-japan.jp/ko/> <https://www.okayama-japan.jp/th/> <https://www.okayama-japan.jp/fr/> <https://www.okayama-japan.jp/de/>

## Okayama prefecture SNS

岡山県SNS

[English]



[简体字]



[台灣]



[香港]



[한국어]



[ภาษาไทย]



[Français]



<https://www.facebook.com/okayamaeng/> <https://www.weibo.com/okayamajp/> <https://www.facebook.com/okayamatw/> <https://www.facebook.com/okayamahk/> <https://www.facebook.com/okayamako/> <https://www.facebook.com/okayamathai/> <https://www.facebook.com/okayamafr/>





# OKAYAMA JAPAN 日本岡山

## Contents 目錄

- Okayama City [Okayama Korakuen Garden, Okayama Castle] — P.3  
岡山市【岡山後樂園・岡山城】
- Kurashiki City [Kurashiki Bikan Historical Quarter] — P.5  
倉敷市【倉敷美觀地區】
- Kojima [Betty Smith Jeans Museum and Kojima Jeans Street] — P.7  
兒島【貝蒂史密斯牛仔褲博物館・兒島牛仔褲大道】
- Momotarō [Okayama and Momotarō] — P.8  
桃太郎【岡山與桃太郎】
- Fruit Picking — P.9  
摘採水果
- Town of Fruit Parfait, Okayama — P.10  
水果芭菲(parfait)之城 岡山
- Three Hot Springs of Mimasaka — P.11  
[Yunogo Onsen Hotspring, Yubara Onsen Hotspring, and Okutsu Onsen Hotspring]  
美作三湯【湯鄉溫泉・湯原溫泉・奧津溫泉】
- Flowers of Okayama, Autumn Leaves in Okayama — P.13  
岡山之花・岡山的紅葉
- Okayama Souvenirs, Foods in Okayama — P.14  
岡山的土特產・岡山的美食
- Experience in Okayama — P.15  
岡山的體驗

## Okayama Wide Area Map 岡山縣廣域地圖



## Western Japan Wide Area Map 西日本廣域地圖



Enlarged View of Okayama Area P.4  
岡山區域放大圖 P.4

Enlarged View of Kurashiki Area P.6  
倉敷地區放大圖 P.6

Enlarged View of Kojima Area P.7  
兒島區域放大圖 P.7



# Okayama City

[Okayama Korakuen Garden, Okayama Castle]

岡山市【岡山後樂園・岡山城】

Awarded the highest rating of three stars from the Michelin Green Guide

## One of the three great gardens of Japan with more than 300 years of history

榮獲歐洲旅行社的旅行說明書的最高評級「三星」的殊榮。  
擁有300年以上歷史的日本三大名園之一。



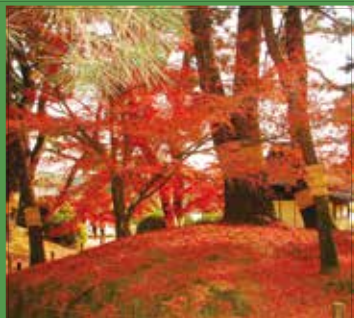
### Okayama Korakuen Garden 岡山後樂園

- Access: Ride streetcar bound for "Higashiyama" for about 4 minutes from JR Okayama Station, get off at "Shiroshita" and walk for about 10 minutes, or ride bus bound for "Fujiwara-Danchi" for about 12 minutes, and get off at "Korakuen-mae."
- Open: 7:30 - 18:00 (March 20 to September 30), 8:00 - 17:00 (October 1 to March 19)  
\*Last entry is 15 minutes prior to closing time.
- Admission: ¥410
- Tel: 086-272-1148

- 交通/從JR岡山站乘前往東山的市內電車約4分鐘在「城下」下車步行約10分鐘。從JR岡山站乘前往藤原園地的市內巴士約12分鐘在「後樂園前」下車就是
- 開園時間/7:30~18:00(3月20日~9月30日)・8:00~17:00(10月1日~3月19日)  
※入園截止至到5分鐘前
- 入園費/410日圓
- 電話/086-272-1148



Okayama Korakuen Garden's cherry blossoms in full bloom (Early April)  
櫻花盛開的岡山後樂園 (4月上旬)



Okayama Korakuen Garden resplendent in autumn colors (Mid-November to early December)  
紅葉映紅了岡山後樂園 (11月中旬~12月上旬)



Garden lighting 岡山後樂園 幻想庭園  
The evening lighting offers a different atmosphere from the daytime scene. The closing time is extended to 21:30 (last entry 21:00). Period: Early May, August, Late November  
有著與白天不同的風光情趣。(開園時間延長到下午9點半為止(入園截止至到下午9點)舉辦期間:5月上旬、8月、11月下旬)



Castle lighting 岡山城 鳥城燈源鄉  
Take in the spectacle of the illuminated Okayama Castle. The closing time is extended to 21:30 (last entry 21:00). Period: Early May, August, Late November  
享受遊覽被燈光通明岡山城夜景之樂趣。(開園時間延長到下午9點半為止(入園截止至到下午9點)舉辦期間:5月上旬、8月、11月下旬)

### Shopping in Okayama 在岡山購物

AEON MALL 永旺購物商城 岡山



About 350 shops in a multi-story building of two stories underground and eight stories above. Some shops are tax-free. 該購物商城由地下2層、地上8層的多層樓構成。現有約350家專門店。連設有部分免稅店。  
● Access: A 5 minute walk to the south from JR Okayama Station (The underpass directly links the station and the mall) ● Tel: 086-803-6700  
● 交通/從JR岡山站南側步行5分鐘。地下通道直接連接岡山車站 ● 電話/086-803-6700

Okayama Ichiban Gai 岡山一番街



Okayama Station's underground shopping mall that houses fashion stores, general stores, coffee shops, restaurants, etc. 這是一個匯集服飾、雜貨、咖啡、飲食店等的岡山站地下購物中心。  
● Access: Directly linked to JR Okayama Station. ● Tel: 086-232-9411  
● 交通/與JR岡山站直接連接 ● 電話/086-232-9411

Sun Station Terrace Okayama 岡山



A station shopping mall that has something for everyone, from souvenirs to book. 這是一個經銷從土特產到書籍等各種生活用品的站內購物中心。  
● Access: Directly linked to JR Okayama Station. ● Tel: 086-800-1020  
● 交通/與JR岡山站直接連接 ● 電話/086-800-1020

Omote-cho Shopping Street 表町商店街



This shopping arcade is more than 1km in total length. The Tenmaya Department Store is Japan's first tax-free counter. 總長1km以上的拱頂商店街。在天滿屋百貨店內設有日本初的一次性消費免稅手續服務台。  
● Access: Take a bus bound for "Tenmaya" from JR Okayama Station for 10 minutes and get off at the Tenmaya Bus Station. ● 交通/從JR岡山站乘前往天滿屋巴士約10分鐘。在天滿屋站下車即到



## Okayama Castle 岡山城

The castle where the feudal lord who created Korakuen lived. It is also called "Ujo" (crow castle) for its black appearance. 這是建造後樂園的領主居住的城堡。因外觀漆黑，又稱其為「烏城」。

- Access: Take the streetcar bound for "Higashiyama" from JR Okayama Station, get off at "Shiroshita" and walk for about 10 minutes, or take either the Okaden Bus bound for "Okaden Takaya" or the Ryobi Bus bound for "Higashiyama-keiyu-Saidaiji," and get off at "Kencho-mae."
- Open: 9:00 - 17:30 (Last entry 17:00)
- Admission: Adults ¥320, Children ¥130
- Tel: 086-225-2096

- 交通/從JR岡山站乘「前往東山」路面電車在「城下」下車步行約10分鐘。無論是乘「前往岡電高屋」岡電巴士或者乘「前往東山經由西大寺」兩備巴士都在「縣廳前」下車
- 開館時間/9:00~17:30(入館截止至到17:00) ● 入場費/大人320日圓、孩子130日圓
- 電話/086-225-2096

### Kimono Wearing Experience 穿和服體驗

Transform yourself into a prince or princess with a gorgeous costume!  
穿上御園豪華的服裝，就像一個名門的公子和閨秀。



- Required time: 10 minutes/person
- Place: Okayama Castle Tower 2F
- Fee: Free of charge
- 所需時間/10分鐘/人
- 場所/岡山城天守閣 2樓
- 費用/免費

### Bizen Pottery Workshop 備前燒工房

Make Bizen pottery in the castle. 在城堡中製作備前燒。



- Required time: 60 minutes
- Place: Okayama Castle Tower 1F
- Fee: ¥1,250 Overseas shipping is available. Shipping fees are not included.
- 所需時間/60分鐘
- 場所/岡山城天守閣 1樓
- 費用/1,250日圓。可郵寄到國外。寄費另計。

### Oshiro Chaya (Castle Teahouse) 城堡茶屋

Located on the second floor of the castle, famous for white peach juice, white peach ice cream, fruit parfaits, and much more. 設在城堡的2樓。這裡的白桃果汁、白桃冰淇淋、還有水果芭菲等非常有名。



- Place: Okayama Castle Tower 2F
- 場所/岡山城天守閣 2樓



## Cafés and Restaurants 咖啡 & 餐廳

Enjoy local dishes using ingredients from Okayama and its popular local menus. 品嚐使用岡山縣產的食材做成的鄉土料理。以及有人氣的當地菜單料理。

### Miyashita Sake Brewery 宮下酒造 "Sake Kobo DOPPO-KAN" 「酒工房 獨步館」

Delight in exquisite sake and cuisine prepared by kuramoto (sake brewers) 在酒窖(釀酒師)品嚐上品美酒和美味料理



- Access: About a 3 minute walk from JR Nishigawara-Shujitsu Station
- Open: Shop 10:00 - 19:00, Restaurant 11:30 - 21:00
- Brewery tour 10:45 - 14:00 - \*Reservations available on the website.
- Closed: Wednesdays ● Tel: 086-270-8111
- 交通/從JR西川原-就實站步行約3分鐘 ● 營業時間/商店10:00~19:00、餐廳11:30~21:00、酒窖參觀10:45~14:00 ※網上預訂
- 定休日/星期三 ● 電話/086-270-8111

### Azumazushi 吾妻壽司

Enjoy Okayama's very own sushi such as "Okayama barazushi." 享受品嚐「岡山什錦壽司」等岡山壽司之美。



- Access: JR Okayama Station 2F
- Open: 11:00 - (Last order 21:30) (Takeout: 10:00 - until sold out)
- Closed: Open throughout the year
- Tel: 086-227-7337
- 交通/ JR岡山站2樓
- 營業時間/11:00~(最後訂餐截止至21:30) (外帶餐從10:00~賣完為止)
- 定休日/年中無休 ● 電話/086-227-7337

### Japanese-Style Pub Akari 日式居酒屋 AKARI

A relaxing space that serves carefully selected ingredients in a friendly atmosphere. 精選的食材和溫馨的空間



- Access: About a 10 minute walk from JR Okayama Station
- Open: Mondays to Thursdays 18:00 - 24:00 (last order 23:00), Fridays and Saturdays 17:00 - 24:00 (last order 23:00), Sundays and holidays 17:00 - 23:00 (last order 22:00)
- Closed: Not fixed ● Tel: 086-803-5580
- 交通/從JR岡山站步行約10分鐘 ● 營業時間/星期一~星期四18:00~24:00(最後訂餐截止至23:00)、星期五~星期六17:00~24:00(最後訂餐截止至23:00)、星期日、節假日17:00~23:00(最後訂餐截止至22:00) ● 定休日/不定休 ● 電話/086-803-5580

### Ajitsukasa Nomura 味司野村

Original Domikatsu-don Restaurant established in 1931. 是一家創業於1931年的元祖豬肉蓋飯飯的老字號店。



- Access: About a 7 minute walk from JR Okayama Station
- Open: 11:00 - 14:30, 17:30 - 21:00 on weekdays 11:00 - 21:00 on Saturdays, Sundays, and holidays
- Closed: Open throughout the year (except the year-end and New Year holidays)
- Tel: 086-222-2234
- 交通/從JR岡山站步行約7分鐘
- 營業時間/平日11:00~14:30、17:30~21:00 星期六、星期日、節假日11:00~21:00
- 定休日/無休(年底年初除外) ● 電話/086-222-2234

### Mitsuba 三葉

Original meat dishes using only the finest ingredients are always favorites. 只使用精選食材烹製而成的肉料理。



- Access: About a 7 minute walk from JR Okayama Station
- Open: 17:30 - 24:00 (Last order 23:00)
- Closed: Mondays, year-end and New Year holidays
- Tel: 086-222-2328
- 交通/從JR岡山站步行約7分鐘
- 營業時間/17:30~24:00(最後訂餐截止至23:00)
- 定休日/星期一、年底年初 ● 電話/086-222-2328



# Kurashiki City

[Kurashiki Bikan Historical Quarter]

倉敷市【倉敷美觀地區】

A 10 minute walk from Kurashiki Station will take you back in time.

## A retro-modern cityscape with white-walled house in a scene that combines old Japanese flavor and modern culture

從倉敷站步行約10分鐘就能享受時光飛躍  
白牆之街以及日本古代文化與現代文化的  
融匯相成美麗之城。

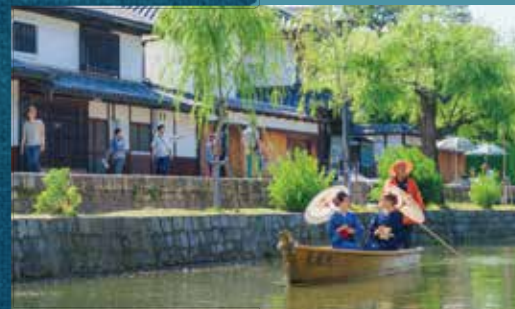


### Kurashiki Bikan Historical Quarter

● Access: A 13 minute walk from JR Kurashiki Station  
● Tel: 086-422-0542 (Kurashiki Tourist Information Center)

### 倉敷美觀地區

● 交通 / 從JR倉敷站步行13分鐘  
● 電話 / 086-422-0542 (倉敷觀光詢問處)



### Kurashiki River Boat Riding 倉敷河遊覽船

Take a boat ride and enjoy the nostalgic scenery along the Kurashiki River that flows in the Kurashiki Bikan Historical Quarter. 乘坐遊覽船觀賞流經倉敷美觀地區的倉敷河沿途的風光美景。

- Fee: Adults ¥500, Children ¥250 (5 years old to elementary school students)
- Hours: 9:30 - 17:00 (Boats leave every 30 minutes.)
- Closed: March to November / 2nd Monday (excluding holidays), December to February / Open only on Saturdays, Sundays and holidays
- Place: Kurashiki Bikan Historical Quarter River Boat Landing Place
- Tickets available at Kurashikikan Tourist Information
- Open only on Saturdays, Sundays, and holidays from December to February
- 費用 / 大人500日圓 孩子250日圓(5歲~小學生以下)
- 運行時間 / 9:30~17:00(每30分鐘發一次船)
- 定休日 / 3~11月的第二個星期一(節假日除外)、12~2月僅限星期六、星期日、節假日營業
- 場所 / 美觀地區河船停船處
- 在倉敷觀光詢問處購買船票
- 12月~2月僅限星期六、星期日、節假日營業



### Kimono Rental [Kurashiki Kimono Komachi] 和服租借[倉敷和服小町]

Enjoy walking in the Kurashiki Bikan Historical Quarter wearing kimono. Kimono made from denim from the Kojima region is also available. 您不想穿上和服在美觀地區散步嗎? 選出租兒島產的牛仔布和服。

- Access: About a 5 minute walk from JR Kurashiki Station
- Fee: Kimono DAY plan ¥3,500 (women), ¥4,500 (men); Kimono NIGHT plan ¥4,500 (women), ¥5,500 (men)
- Rental hours: DAY plan 9:00 - 18:00, NIGHT plan 15:00 - 12:00 (next day)
- 交通 / 從JR倉敷站步行約5分鐘
- 費用 / 和服款式 DAY 項目3,500日圓(女性)、4,500日圓(男性) NIGHT款式4,500日圓(女性)、5,500日圓(男性)
- 營業時間 / DAY項目9:00~18:00、NIGHT項目15:00~第二天的12:00

### Ohashi Residence 大橋家邸宅

A traditional Edo period townhouse. The unique Kurashiki architectural beauty can be found in the windows, lattices, and other structural components. 江戸時代建造的商家。可以觀賞窗、格子等倉敷特有的建築之美。



- Access: About a 10 minute walk from JR Kurashiki Station
- Open: 9:00 - 17:00 (until 18:00 on Saturdays from April to September)
- Admission: Adults ¥550, elementary and junior high school students ¥350, 65 years old or older ¥350
- Closed: Every Friday from December to February, December 28 - January 3
- Tel: 086-422-0007
- 交通 / 從JR倉敷站步行約10分鐘
- 開館時間 / 9:00~17:00 (4月~9月的星期六截止至18:00)
- 入場費 / 大人550日圓、中、小學生350日圓、65歲以上350日圓
- 休館日 / 12月~2月的每週週五和12月28日~1月3日
- 電話 / 086-422-0007

### Ohara Art Museum 大原美術館

The first private museum of Western art in Japan, exhibiting a large collection including world-famous paintings. 日本最早開辦的私立西洋美術館，展示以世界級名畫為主的多數美術作品。



- Access: About a 15 minute walk from JR Kurashiki Station
- Open: 9:00 - 17:00 (Admission until 16:30)
- Admission: ¥1,500, senior and junior high school students and elementary school students ¥500
- \*Admission to Main Hall, Annex, and Craft Art Gallery and Asian Art Gallery.
- Closed: Mondays (Open if Monday is a holiday or substitute holiday) and December 28-31 \*Open from late July to August and everyday in October
- Tel: 086-422-0005
- 交通 / 從JR倉敷站步行約15分鐘
- 開館時間 / 9:00~17:00 (入館截止至16:30)
- 入場費 / 1,500日圓、小學中學高中生500日圓
- ※本館、分館、工藝、東洋館可以入場。
- 休館日 / 星期一(定休日與節假日、替休日重疊時開館) 12月28日~12月31日 ※7月下旬~8月、10月無休
- 電話 / 086-422-0005

## Cafés, Restaurants, and Souvenirs

Why not take browse and shop at fashionable shops in the Kurashiki Bikan Historical Quarter? 您不想去逛一下倉敷美觀地區的各種時尚店嗎?



### Hyogukobo (Mounting Studio) Nyochikudo 表具工房 如竹堂

Sells a variety of cute and colorful masking tape! 可愛的花紋裝飾膠帶琳瑯滿目!



- Access: About a 20 minute walk from JR Kurashiki Station
- Open: 10:00 - 17:30
- Open throughout the year
- Tel: 086-422-2666
- 交通 / 從倉敷站步行約20分鐘
- 營業時間 / 10:00~17:30
- 無休息日
- 電話 / 086-422-2666

### Kurashiki Momoko 倉敷桃子

Enjoy sweets made from seasonal fruits. 供應使用時鮮水果做成的各種甜點。



- Access: About a 10 minute walk from JR Kurashiki Station
- Open: 10:00 - 17:00
- \*Last order at the café is 30 minutes prior to closing time.
- Open throughout the year.
- Tel: 086-427-0007
- 交通 / 從倉敷站步行約10分鐘
- 營業時間 / 10:00~17:00 (咖啡店關門的前30分鐘為最後訂餐)
- 定休日 / 無休
- 電話 / 086-427-0007

### Machiya Kissa Miyake Shouten 商家咖啡 三宅商店

Set in a traditional Edo period wooden townhouse, this café is popular for its fruit-based sweets. 利用江戸時代的商家改建而成的咖啡店。用水果做成的甜點很有人氣。



- Access: About a 10 minute walk from JR Kurashiki Station
- Open: 11:30 - 17:30 (varies depending on the season)
- Closed: Open year round
- Tel: 086-426-4600
- 交通 / 從JR倉敷站步行約10分鐘
- 營業時間 / 11:30~17:30 (根據季節有變動)
- 定休日 / 年中無休
- 電話 / 086-426-4600

### Guest House U-rin-an 町屋 有鄰庵

Famous for SHIAWASE (happy) pudding that makes you happy. 吃過後有一種幸福感! 幸福布丁很有人氣。



- Access: About a 10 minute walk from JR Kurashiki Station
- Open: 11:00 - until all products on that day are sold out
- Closed: Check in advance
- Tel: 086-426-1180
- 交通 / 從倉敷站步行約10分鐘
- 營業時間 / 從11:00~到當天的商品賣完為止
- 定休日 / 不定休
- 電話 / 086-426-1180

### BAISTONE Kurashiki Hanpu BAISTONE 倉敷帆布

Items made of light and durable canvas are sold. 經銷使用輕量結實的帆布製成的創意性時尚商品。



- Access: About a 15 minute walk from JR Kurashiki Station
- Open: 10:00 - 18:00
- Closed: Year-end and New Year's holidays
- Tel: 086-435-3553
- 交通 / 從倉敷站步行約15分鐘
- 營業時間 / 10:00~18:00
- 定休日 / 無休 (但是, 年年初除除外)
- 電話 / 086-435-3553

## Shopping in Kurashiki 在倉敷購物



**MITSUI OUTLET PARK**  
三井アウトレットパーク 倉敷

**Mitsui Outlet Park Kurashiki Mitsui Outlet Park 倉敷**

An outlet mall that houses about 120 shops, such as select shops selling items of famous domestic and foreign brands and makers. Some shops are duty free. 這是一個匯集了約120家來自國內外有名廠商以及奢侈品牌、專門零售店等的購物商城。這設有部分免稅店。

● Access: Directly linked to JR Kurashiki Station. ● Tel: 086-423-6500  
● 交通 / 與JR倉敷站直接連接 ● 電話 / 086-423-6500



**Ario**  
アリオ倉敷

**Ario Kurashiki Ario倉敷**

Some shops are tax-free. 這設有部分免稅店

A large commercial complex that houses specialty stores such as fashion shops, household goods stores, food courts, and restaurants. 從服飾到生活日用品、快餐業、還有餐館等專門店構成的大型商業設施。

● Access: Directly linked to JR Kurashiki Station. ● Tel: 086-434-1111  
● 交通 / 與JR倉敷站直接連接 ● 電話 / 086-434-1111

## Let's make Japanese-style confectionery! 挑戰製作日本點心

Hands-on experience baking Murasuzume [Kikkodō in the Kurashiki Bikan Historical Quarter] 體驗製作手烤蛋餡餅 [橘香堂 美觀地區店]



- Access: About a 10 minute walk from JR Kurashiki Station
- Open: 9:00 - 18:00
- Experience time: 10:00-16:00 (Required time; about 5 minutes)
- Fee: Normal size (3 pieces) ¥600, Jumbo size (1 piece) ¥1,200
- Tel: 086-424-5725
- 交通 / 從倉敷站步行約10分鐘
- 營業時間 / 9:00~18:00
- 體驗時間 / 10:00~16:00 (所需時間約5分鐘)
- 費用 / 普通尺寸×3個 600日圓、大尺寸×1個 1,200日圓
- 電話 / 086-424-5725





# Kojima, a port city that faces the Seto Ohashi Bridge, is the birthplace of Japan's domestically manufactured jeans.

面臨瀨戶大橋的海港之城兒島是日本國產牛仔褲之發源地。

- Access: 10 minutes by car from Kojima Station
- Tel: 086-473-4460
- Head Office of Betty Smith: Jeans orders/¥31,000\*
- Jeans-making experience: ¥7,700\* (Reservations required)
- Jeans Museum: Open 9:00 - 18:00
- Open throughout the year except year-end and New Year's holidays. Admission is free.
- Outlet shop: Open 9:00 - 18:00
- 交通 / 從兒島站開車約10分鐘 ● 電話 / 086-473-4460
- 貝蒂史密斯 (Betty Smith) 總公司
- 訂做牛仔褲 / 31,000日圓 ~ 體驗製作牛仔褲 / 7,700日圓 (需要預約)
- 牛仔褲博物館 開館時間 / 9:00~18:00
- 休館日 / 年中無休(年底年初除外) 入館費 / 免費
- 直銷店 營業時間 / 9:00~18:00

Betty Smith Jeans Museum  
貝蒂史密斯牛仔褲博物館



**Making straps**  
Make your own straps by riveting.  
製作飾帶  
釘上鐵釘可製作各種飾帶。



**Order jeans**  
Order your own original jeans, selecting fabric, size, etc.  
特製牛仔褲  
可以定做一條自己的從布料、尺寸等都是世界上獨一無二的牛仔褲。



**Outlet shop**  
Purchase jeans made in Kojima at reasonable prices.  
直銷店  
可購買貨價適宜的兒島牛仔褲。

## Kojima Jeans Street

Enjoy touring and shopping in the jeans district. Local jeans makers and sellers line the street. Find the jeans that match your style.

## 兒島牛仔褲大道

當地牛仔褲廠家的店舖鱗次櫛比，請選購自己喜歡的牛仔褲。



● Access: About a 15 minute walk from JR Kojima Station  
● 交通 / 從JR兒島站步行約15分鐘



**Jeans Bicycle Rentals**  
牛仔褲租借自行車

Bicycles wrapped in the image of jeans available for rent.  
印有牛仔褲花紋的租借自行車。

- Access: About a 3 minute walk from Kojima Station on the JR Seto-Ohashi Line
- Open: 9:00 - 17:00
- Rental office: Kurashiki City, Kojima Industrial Promotion Center
- Fee: ¥500 for one-time use
- Tel: 086-441-5123
- 交通 / 從瀨戶大橋兒島站步行約3分鐘
- 營業時間 / 9:00~17:00
- 受理 / 倉敷市兒島產業振興中心
- 費用 / 500日圓/次
- 電話 / 086-441-5123

## Seto Ohashi Bridge 瀨戶大橋

Panoramic view of the floating islands of the Seto Inland Sea and the Seto Ohashi Bridge viewed from Mt. Washuzan.

從鷲羽山可觀瀨戶內海的多島美和瀨戶大橋之美景。

- Access: About 10 minutes by car from Kojima Interchange on the Seto-Chuo Expressway
- 交通 / 從瀨戶中央自動車道兒島IC開車約10分鐘



# Momotaro

[Okayama and Momotaro]  
桃太郎  
【岡山與桃太郎】

“Momotaro,” hero of the most famous folktale in Japan.

「桃太郎」是日本家喻戶曉的日本民間神話傳說中的主人公。



This is a story about a boy called Momotaro born from a giant peach - He grew up strong and travelled to a distant island to fight a band of ogres, together with a dog, a monkey and a pheasant, whom he met along the way and befriended by giving them Kibi dango (millet dumplings).

從桃子裡蹦出來的桃太郎，長大後前往鬼島為民除害，一路上桃太郎用糯米糰子收容了小白狗、小猴子、雉雞作為家臣，一起奮戰，最後一舉消滅了可惡鬼怪的傳說故事。



## 1 Kibitsujinja Shrine 吉備津神社

Legend has it that the head of an ogre slain by Momotaro is buried in the shrine. Narukama Shinji - a special event that predicts good or bad fortune by the sound emitted from a big iron kettle when rice is boiled - is still performed today.  
據傳，這裡是埋葬被桃太郎消滅的妖鬼頭顱之地。吉備津神社傳承了「鳴釜神事」的祭神儀式，通過用大鍋煮飯時發出的響聲來占卜吉凶。

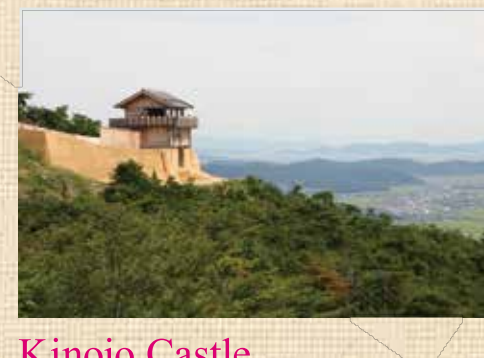
- Access: About a 10 minute walk from Kibitsu Station on the JR Momotaro Line
- Open: 8:30 - 16:00 (Narukama Shinji Fee: ¥3,000 - , Closed: Fridays, Admission: until 14:00) ● Tel: 086-287-4111
- 交通 / 從JR桃太郎線吉備津站步行約10分鐘 ● 參拜時間 / 8:30~16:00 (鳴釜神事 費用 / 3,000日圓 ~ 定休日 / 每週星期五、受理時間 / 截止到14:00)



## 2 Kibitsuhekojinja Shrine 吉備津彥神社

The shrine honors Kibitsuheko-no-mikoto, a famous model for Momotaro. 供奉桃太郎的原型「吉備津彥命」之神社。

- Access: About a 3 minute walk from Bizen Ichinomiya Station on the JR Momotaro Line ● Tel: 086-284-0031
- 交通 / 從JR桃太郎線備前一宮站步行約3分鐘 ● 電話 / 086-284-0031



## Kinojo Castle 鬼城

An ancient mountain castle stands on Kinojozan at an elevation of nearly 400m. Some say that the castle was the stage for the battle to defeat a band of ogres in the folktale “Momotaro.”  
矗立於高約400米的鬼城山之古代山城。據說它是傳說故事「桃太郎」中的驅鬼之舞台。

- Access: About 30 minutes by taxi from JR Soja Station ● Open: 9:00 - 17:00
- Closed: Mondays (or the following day if Monday is a holiday) and December 29 to January 3 ● Tel: 0866-99-8566 (Soja City Kinojozan Visitor Center)
- 交通 / 從JR總社站乘計程車約30分鐘 ● 營業時間 / 9:00~17:00
- 休息日 / 星期一(節假日時照常營業，改為第二天休息)、12月29日~1月3日
- 電話 / 0866-99-8566 (總社市鬼城山遊客中心)

## Okayama Momotaro Festival 岡山桃太郎節

A summer festival in Okayama held on the first Saturday and Sunday of August of each year.  
每年8月的第1個星期六和星期日的兩天，舉行岡山祭夏節。

### Uraja Dance Parade 溫羅舞

Dancers with faces made up like Ura, an ogre that appears in the story of Momotaro, participate in this parade of dance competitions.  
參加者化妝成桃太郎傳說中出現的妖鬼「溫羅」的模樣起舞、遊行。

Lined with Momotaro images everywhere!  
岡山街中隨處可見桃太郎的塑像!!

- Manhole 下水道井蓋
- Statue of Momotaro 桃太郎塑像
- Mailbox 郵箱

## Momotaro Karakuri Museum 桃太郎機關博物館

This is a unique museum with an exhibit dedicated entirely to Momotaro.  
展示「桃太郎」資料的珍奇博物館。

- Access: About a 15 minute walk from JR Kurashiki Station ● Open: 10:00 - 17:00
- Admission: Adults ¥600, Elementary, junior and senior high school students ¥400, Children (5 years old or older) ¥100 ● Open throughout the year. ● Tel: 086-423-2008
- 交通 / 從JR倉敷站步行約15分鐘 ● 開館時間 / 10:00~17:00 ● 入場費 / 大人600日圓、小學中學高中生400日圓、幼兒(5歲以上) 100日圓 ● 休館日 / 年中無休 ● 電話 / 086-423-2008

## Famous millet dumplings that appear in the story of Momotaro 桃太郎傳說中出現的名點心

### Kibi dango 吉備糰子

Momotaro is said to have given Kibi dango to the animals that agreed to help him in his quest to defeat the ogres.  
桃太郎施給成為家臣的動物們的點心。



Fruit Kingdom Okayama  
水果王國岡山

# Enjoy excellent fruits to your heart's content!

盡情品嚐美味絕品水果!

Fruit picking  
摘採水果



Fruit parfait  
水果芭菲

Enjoy sun-blessed delicious fruits throughout the year from Okayama thanks to its mild climate.

享受自然恩惠的岡山，晴天多，氣候溫暖，可以一年四季品嚐美味香甜的水果。

"Fruit Kingdom Okayama" is a famous production area of exquisite fruits. Enjoy seasonal delicious fruits only in this production area.

「水果王國岡山」是絕品水果的名產地。可以品嚐只有產地才能享受到的時鮮絕美味。

Okayama is proud of its delicious fruits  
岡山以其優美美味香甜水果



清水白桃  
岡山縣生產的「清水白桃」被稱譽桃中之王，產量居日本第一。具有白嫩、果肉柔軟入口即化的高雅甜味之特點。

Muscad of Alexandria (white peach)  
被稱譽「水果女王」，該品種具有高雅的香氣和甜味之特點。



New Pine  
This is a type of seedless grape which is large and has a rich sweetness and mild sourness.

Hareichigo  
Premium strawberries produced in Okayama, the perfect combination of a hearty sweetness and a slightly sour taste.

晴莓  
品嘗濃郁香甜略帶酸味的岡山縣產高級草莓。

HOTEL GRANVIA OKAYAMA  
Lobby Lounge Lumière  
岡山格蘭比亞酒店  
前廳休息室Lumière

- Address: HOTEL GRANVIA OKAYAMA 2F, 1-5, Ekimoto-machi, Kita-ku, Okayama-shi, Okayama
- Open: 8:30 - 19:00
- \* Time when parfaits can be eaten 12:00 - 19:00 (Last order 18:30)
- Closed: Open throughout the year
- Tel: 086-234-7000 (main)
- 地點/岡山市北區站元町1-5 岡山格蘭比亞酒店2樓
- 營業時間/8:30-19:00
- ※可食芭菲時間 12:00-19:00(最後訂餐截止到 18:30)
- 休息日/無休 ●電話/086-234-7000(總機)



OKAYAMA PLAZA HOTEL Restaurant "irodori"  
岡山plaza酒店  
餐廳「彩」

- Address: OKAYAMA PLAZA HOTEL 1F, 2-3-12, Hama, Naka-ku, Okayama-shi, Okayama
- Open: 11:00 - 20:30 (Last order 20:00)
- \* Saturdays, Sundays and public holidays: 10:00 - 20:30 (Last order 20:00)
- Closed: Open throughout the year
- \* Time when parfaits can be eaten 14:00 - 18:00 ●Tel: 086-272-1201
- 地點/岡山市中區濱2-3-12 岡山plaza酒店1樓 ●營業時間/11:00-20:30(最後訂餐截止到20:00)※週六、週日、節假日為10:00-20:30(最後訂餐截止到20:00)※可食芭菲時間 14:00-18:00 ●休息日/無休 ●電話/086-272-1201



FRUITS-J BOUTIQUE Okayama Tenmaya  
FRUITS-J BOUTIQUE 岡山天滿屋店

- Address: TENCHIKA FOOD GARDEN, 2-1-1, Omote-cho, Kita-ku, Okayama-shi, Okayama
- Open: 10:00 - 19:30
- Closed: According to Okayama Tenmaya
- Tel: 086-231-7673
- 地點/岡山市北區表町2-1-1 天地FOOD GARDEN內
- 營業時間/10:00-19:30
- 休息日/以岡山天滿屋為準 ●電話/086-231-7673



ANA CROWNE PLAZA HOTEL OKAYAMA Casual Dining URBANO  
全日空皇冠廣場酒店岡山  
休閒餐廳URBANO

- Address: ANA CROWNE PLAZA HOTEL OKAYAMA 1F, 15-1, Ekimoto-machi, Kita-ku, Okayama-shi, Okayama
- Open: 11:30 - 21:30 (Last order 21:00)
- \* Time when parfaits can be eaten 14:30 - 17:30
- Closed: Open throughout the year
- Tel: 086-898-2268
- 地點/岡山市北區站元町15-1 全日空皇冠廣場酒店岡山1樓
- 營業時間/11:30-21:30(最後訂餐截止到21:00)※可食芭菲時間 14:30-17:30
- 休息日/無休 ●電話/086-898-2268



Café "ANTENNA" 咖啡「Antenna」

- Address: 1-8-23, Izushi-cho, Kita-ku, Okayama-shi, Okayama
- Open: 11:00 - 19:00
- Closed: Tuesdays
- Tel: 086-221-9939
- 地點/岡山市北區出石町1-8-23
- 營業時間/11:00-19:00
- 休息日/週二 ●電話/086-221-9939



cooking of art Ikiya

- Address: La Paul Building 1F, 2-1-7, Yanagi-machi, Kita-ku, Okayama-shi, Okayama
- Open: 18:00 - 24:00 (Last order 23:00)
- Closed: Wednesdays
- Tel: 086-801-2828
- 地點/岡山市北區柳町2-1-7 La Paul大樓1樓
- 營業時間/18:00-24:00(最後訂餐截止到23:00)
- 休息日/週三 ●電話/086-801-2828



## Experience Fruit Picking 摘採水果體驗

Peach Picking (Best season July to August)  
摘採桃(最佳季節7~8月)

3 Tomomien 桃茂實苑

- Access: About 10 minutes by car from San'yo IC on the San'yo Expressway - From JR Okayama Station, take the bus bound for Heopdis (Higashi Echome or Nishi 9-chome) by way of San'yo Danchi, get off at "Shimochikami" or "Shimochi" and walk for about 5 minutes. ●Period: Peaches: Late June to mid-August - Pine grapes: Late August to late September - Muscad grapes: Early September to early October ●Open: 9:00 - 16:00 ●Fee: Pick one peach (Saverini) + Eat one peach: 1,200 - Pick one bunch of Pine grapes (Saverini) + Eat 20 Pine grapes: 1,900 - Pick one bunch of Muscad grapes (Saverini) + Eat 20 Muscad grapes: 1,900 ●Parking Lot: For 100 ordinary vehicles ●Reservations: Tel: 086-958-5444 \* Reservations required. Website: https://reserva.be/tomomien
- 交通/從山陽自動車道山陽IC開車約10分鐘 ●從岡山站乘前往池田線的900號(東山陽巴士)巴士至「下里上」或「下里下」下車，步行約5分鐘 ●期間/桃子：6月下旬~8月中旬 ●青葡萄：8月下旬~9月下旬 ●白桃：9月上旬~10月上旬 ●營業時間/9:00-16:00 ●費用/採採桃子1個(採採桃子)+品嘗20粒：1,200日圓 ●採採青葡萄1串(採採桃子)+品嘗20粒：1,900日圓 ●停車場/大巴15輛/普通車100輛 ●預約/電話：086-958-5444 ●需要預約的網址：https://reserva.be/tomomien

4 Yoshii Farm 吉井農園

- Access: About 30 minutes by car from San'yo IC on the San'yo Expressway or Mimasaka IC on the Chugoku Expressway - From JR Okayama Station, take the bus for about 60 minutes bound for Yurugi Oasen Hayashino Station, get off at "Kiyugatake" and walk for about 5 minutes. ●Period: Peaches: July to early September - Strawberries: January to early May ●Open: 10:00 - 17:00 ●Fee: Pick one peach (Saverini) + Eat one peach: 1,045 - 30 minutes all you can eat (Peaches): 1,245 - 40 minutes all you can eat (Strawberries): 1,100 - 1,900 ●Parking Lot: For 15 large-sized vehicles/100 ordinary vehicles ●Reservations: Tel: 090-7548-0747 \* Reservations required. Website: https://yoshii-farm.com/contact.html
- 交通/從山陽自動車道山陽IC或中國自動車道倉敷IC開車約30分鐘 ●從JR岡山站乘前往津和野線、林野巴士約60分鐘 ●在「栗野」下車，步行約5分鐘 ●期間/桃子：7月上旬~9月上旬 ●青葡萄：11月上旬 ●營業時間/9:00-17:00 ●費用/採採桃子1個(採採桃子)+品嘗1個：1,045日圓 ●採採青葡萄1串(採採桃子)+品嘗1個：1,245日圓 ●採採青葡萄1串(採採桃子)+品嘗20粒：1,900日圓 ●停車場/大巴15輛/普通車100輛 ●預約/電話：090-7548-0747 ●需要預約的網址：https://yoshii-farm.com/contact.html

Grape Picking (Best season September to November)  
摘採葡萄(最佳季節9~11月)

5 Mimasaka Farm 美作農園

- Access: About 30 minutes by car from San'yo IC on the San'yo Expressway or Mimasaka IC on the Chugoku Expressway - About 20 minutes by taxi from JR Hayashino Station ●Period: Grapes (Pine): Late August to early October - Muscad grapes (Shine Muscad): Early September to early October - Strawberries: December to early June ●Open: 9:00 - 17:00 ●Fee: 40 minutes all you can eat (Grapes): 12,000 - 40 minutes all you can eat (Shine Muscad grapes): 13,200 - 40 minutes all you can eat (Strawberries): 11,000 - 11,900 ●Parking Lot: For 100 ordinary vehicles ●Reservations: Tel: 0868-74-3887 \* Reservations required. Website: http://mimasaka.co.jp/english/
- 交通/從山陽自動車道山陽IC或中國自動車道倉敷IC開車約30分鐘 ●從JR岡山站乘計程車約20分鐘 ●期間/青葡萄(新好葡萄)：8月下旬~10月上旬 ●青葡萄(大顆粒新好葡萄)：9月上旬~10月上旬 ●草莓：12月~6月上旬 ●營業時間/9:00-17:00 ●費用/青葡萄40分鐘(限時40分鐘)：12,000日圓 ●大顆粒新好葡萄40分鐘(限時40分鐘)：13,200日圓 ●草莓40分鐘(限時40分鐘)：11,000-11,900日圓 ●停車場/普通車100輛 ●預約/電話：0868-74-3887 ●需要預約的網址：http://mimasaka.co.jp/english/

6 Kubo Farm 久保農園

- Access: About 25 minutes by car from Okayama IC on the San'yo Expressway - About 15 minutes by taxi from JR Kanagawa Station ●Period: Grapes (Bailey A New Pine): Late August to late October - Muscad grapes: Early September to early November ●Open: 10:00 - 17:00 (Reception until 16:00) ●Fee: All-you-can-eat grapes (Bailey A): 11,300 - All-you-can-eat grapes (New Pine): 11,800 - All-you-can-eat Muscad grapes (Muscad of Alexandria): 12,000 ●Parking Lot: For 10 large-sized vehicles, 100 ordinary vehicles ●Reservations: Tel: 086-728-0511 \* Reservations required. Website: https://www.kubofarm.co.jp/oiawase
- 交通/從山陽自動車道岡山IC開車約25分鐘 ●從JR金川站乘計程車約15分鐘 ●期間/青葡萄(Bailey A 新好葡萄)：8月下旬~10月下旬 ●青葡萄(大顆粒新好葡萄)：9月上旬~11月上旬 ●營業時間/10:00-17:00(受理截止到16:00) ●費用/青葡萄1個+品嘗1個：1,045日圓 ●採採青葡萄1串(採採桃子)+品嘗1個：1,245日圓 ●採採青葡萄1串(採採桃子)+品嘗20粒：1,900日圓 ●停車場/大巴10輛/普通車100輛 ●預約/電話：086-728-0511 ●需要預約的網址：https://www.kubofarm.co.jp/oiawase

Strawberry Picking (Best season January to May)  
摘採草莓(最佳季節1~5月)

7 Yamada Bee Farm, Mitsubachi Farm 山田養蜂場 蜜蜂農園

- Access: About 15 minutes by car from Innosho IC on the Chugoku Expressway ●Period: Strawberries: January to May ●Open: 10:00 - 17:00 (Reception until 16:00) ●Fee: 30 minutes all you can eat (Strawberries): 12,178 - 12,420 ●Parking Lot: For 5 large-sized vehicles, 50 ordinary vehicles ●Reservations: Tel: 0868-54-0066 \* Reservations required. E-mail: overseas@3838.com Website: https://ssl.form-mailer.jp/fms/93b23731242626
- 交通/從中國自動車道山陽IC開車約15分鐘 ●期間/草莓：1月~5月 ●營業時間/10:00-17:00(受理截止到16:00) ●費用/草莓30分鐘(限時30分鐘)：12,178日圓~12,420日圓 ●停車場/大巴5輛/普通車50輛 ●預約/電話：0868-54-0066 ●需要預約 電子郵件：overseas@3838.com 網站：https://ssl.form-mailer.jp/fms/93b23731242626

8 Noumaru Engei Kibiji Farm 農丸園藝 吉備路農園

- Access: About 7 minutes by car from Kurashiki IC on the San'yo Expressway - About 5 minutes by taxi from JR Kiyono Station ●Period: Strawberries: January to May ●Open: 9:00 - 16:00 ●Fee: 40 minutes all you can eat (Strawberries): 11,870 ●Parking Lot: For 10 large-sized vehicles, 100 ordinary vehicles ●Reservations: Tel: 0866-94-6755 \* Reservations recommended. Website: http://c-brain.com/noumaru/reserve.php?mise=1
- 交通/從山陽自動車道倉敷IC開車約7分鐘 ●從JR清音站乘計程車約5分鐘 ●期間/草莓：1月~5月 ●營業時間/9:00-16:00 ●費用/草莓40分鐘(限時40分鐘)：11,870日圓 ●停車場/大巴10輛/普通車100輛 ●預約/電話：0866-94-6755 ●建議先預約 網站：http://c-brain.com/noumaru/reserve.php?mise=1

The images are representative examples. Designs and fruits used in parfaits may differ depending on the season. Please enjoy a seasonal fruit parfait! 照片只為一例，使用的水果和芭菲的造型因季節會有變化，請您充分享受。



# Three Hot Springs of Mimasaka

美作三湯  
[Yunogo Onsen Hotspring, Yubara Onsen Hotspring, and Okutsu Onsen Hotspring]

## Three natural hot springs well up from the ground of Mimasaka in Okayama Prefecture, Yunogo Onsen Hotspring, Yubara Onsen Hotspring, and Okutsu Onsen Hotspring

岡山縣美作地區噴湧的三個溫泉，湯鄉溫泉、湯原溫泉、奧津溫泉。



湯鄉溫泉  
Yunogo Onsen Hotspring



湯原溫泉  
Yubara Onsen Hotspring



奧津溫泉  
Okutsu Onsen Hotspring

“Western Japan Champion” on the nationwide outdoor hot spring bath ranking list! A sand bath is also available in the spa.

在日本國內露天浴等級中被評為西橫綱(相撲最高位)! 有噴流砂泉的溫泉地。

湯原溫泉

## 11 Yubara Onsen Hotspring

- Access: Ride bus bound for “Yubara Onsen Hiruzen Kogen” for about 35 minutes from Chugoku Katsuyama Station on the JR Kishin Line, or about 10 minutes by car from Yubara Interchange on the Yonago Expressway.
- Tel: 0867-62-2526 (Yubara Tourist Information Center)
- 交通 / 從JR新線中國勝山站乘前往湯原溫泉、蒜山高原巴士約35分鐘，從米子自動車道湯原IC開車約10分鐘 ● 電話 / 0867-62-2526 (湯原觀光信息中心)

## 12 Yubara Onsen Museum

湯原溫泉博物館

An enjoyable fun-to-learn hot spring museum!  
使人快樂的溫泉博物館!



- Access: Ride bus for about 10 minutes from Hayashino Station on the JR Kishin Line, get off at “Yunogo Onsen Kami” and walk for about 3 minutes, or about 10 minutes by car from Mimasaka Interchange on the Chugoku Expressway.
- Open: 10:00 - 18:00 (Varies depending on season)
- Admission: ¥210
- Tel: 0867-62-3485
- 交通 / 從新線林野站乘巴士約10分鐘，在湯鄉溫泉上巴士站下車，步行約3分鐘，從中國自動車道美作IC開車約10分鐘
- 營業時間 / 10:00~18:00 根據季節有變動
- 費用 / 210日圓
- 電話 / 0867-62-3485



Legend has it that Buddha disguised as a white heron guided a high priest to this hot spring about 1,200 years ago. The hot spring is known as “Bijin-no-yu (hot spring of beauty).”

相傳，距今約1,200年前，高僧在變成白鷺的神佛引導下發現了這個美人泉。

湯鄉溫泉

## 9 Yunogo Onsen Hotspring

- Access: Ride the bus bound for “Okayama” for about 10 minutes from Hayashino Station on the JR Kishin Line, get off at “Yunogo Shimo” and walk for about 5 minutes, or about 10 minutes by car from Mimasaka Interchange on the Chugoku Expressway.
- Tel: 0868-72-0374 (Yunogo Onsen Tourist Office)
- 交通 / 從JR新線林野站下車，乘前往岡山巴士約10分鐘，在湯鄉下車步行5分鐘，從中國自動車道美作IC開車約10分鐘 ● 電話 / 0868-72-0374 (湯鄉溫泉觀光詢問處)

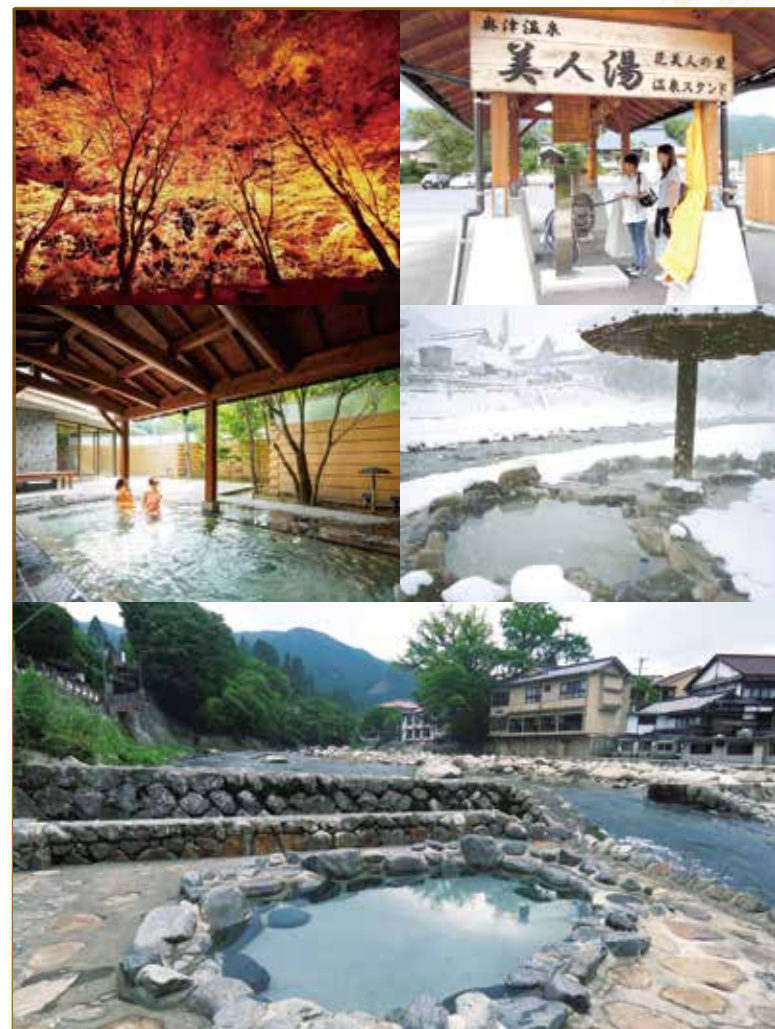
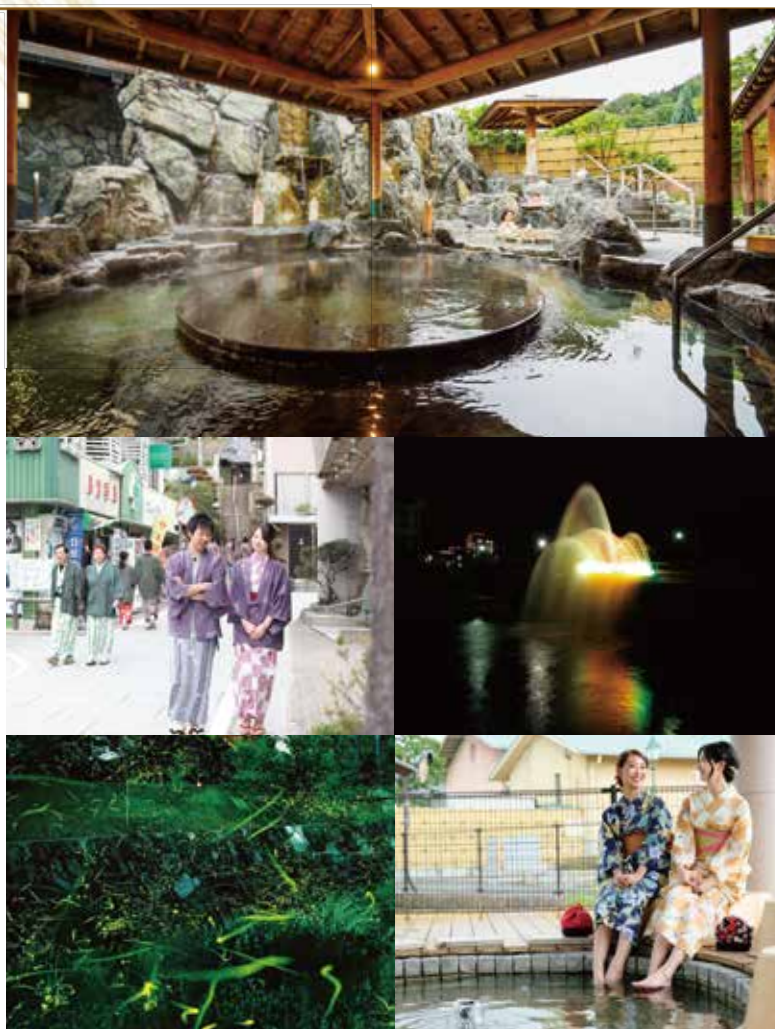
## 10 Museum of Toys and Music Boxes

現代玩具博物館、八音盒夢館

Exhibit includes music boxes from more than 100 years ago, wind-up dolls, and other toys. 展出100年以前的八音盒以及機關(自動裝置)偶人。



- Access: Ride bus for about 10 minutes from Hayashino Station on the JR Kishin Line, get off at “Yunogo Onsen Kami” and walk for about 3 minutes, or about 10 minutes by car from Mimasaka Interchange on the Chugoku Expressway.
- Open: 9:30 - 17:00
- Admission: Adults ¥700, Children ¥300
- Tel: 0868-72-0003
- 交通 / 從新線林野站乘巴士約10分鐘，在湯鄉溫泉上巴士站下車步行約3分鐘，從中國自動車道美作IC開車約10分鐘 ● 營業時間 / 9:30~17:00 ● 費用 / 大人700日圓、孩子300日圓 ● 電話 / 0868-72-0003



Well-known as a place for “foot washing,” this hot spring is said to be good for whitening skin and called “Bijin-no-yu” (hot spring of beauty).

因「腳踩洗衣」而聞名，這裡的溫泉會使您的肌膚變得又白又滑，故譽為美人泉。

奧津溫泉

## 13 Okutsu Onsen Hotspring

- Access: About 60 minutes by bus bound for “Okutsu Onsen” from Tsuyama Station on the JR Tsuyama Line, or about 30 minutes by car from Innosho Interchange on the Chugoku Expressway.
- Tel: 0868-52-0610 (Okutsu Onsen Tourist Association)
- 交通 / 從JR津山線津山站乘前往奧津溫泉巴士約60分鐘，從中國自動車道院莊IC開車約30分鐘 ● 電話 / 0868-52-0610 (奧津溫泉觀光協會)

## 14 Okutsu Onsen Hanabijin-no-sato

奧津溫泉花美人之鄉

One day hot spring facility located at the center of Okutsu Onsen. 位於奧津溫泉中心的當日歸溫泉設施。



- Access: About 60 minutes by bus bound for “Okutsu Onsen” from Tsuyama Station on the JR Tsuyama Line, or about 30 minutes by car from Innosho Interchange on the Chugoku Expressway.
- Open: 10:00 - 19:00 on weekdays, 10:00 - 20:00 on Saturdays, Sundays, and holidays
- Admission fee: Adults (junior high school students and above) ¥740, children (3 years old up to under elementary school age) ¥370 (Private bath ¥1,500 (one hour; admission fee is separately required))
- Tel: 0868-52-0788

- 交通 / 從JR津山線津山站乘前往奧津溫泉巴士約60分鐘，從中國自動車道院莊IC開車約30分鐘
- 營業時間 / 平日10~19點 星期六、星期日、節假日10~20點
- 費用 / 大人(中學生以上) 740日圓、孩子(3歲以上到小學生) 370日圓 家族浴 1500日圓(1小時; 另收入浴費)
- 電話 / 0868-52-0788



# Flowers of Okayama 岡山之花



Peak viewing time: Early to mid-April  
觀賞時節：4月上旬~中旬



Peak viewing time: Late April to early May  
觀賞時節：4月下旬~5月上旬

## 16 Fuji Park (Fuji Wisteria Park) 藤公園 (紫藤公園)

The largest variety of wisteria in Japan! Specially selected wisteria reaches full bloom. 品種數量日本之最！精選的藤樹垂落花開美不勝收。

- Access: About 5 minutes by taxi from JR Wake station
- Open: 8:00 - 21:00
- Admission: Adults ¥300, Elementary and junior high school students ¥150 ● Tel: 0869-93-1126 (Wake Town Hall, Industry Promotion Section)
- 交通：從JR和氣站乘計程車約5分鐘
- 開館時間：8:00~21:00
- 入場費：大人300日圓、中小學生150日圓
- 電話：0869-93-1126 (和氣町役場產業振興課)



Peak viewing time: Mid-May  
觀賞時節：5月中旬

## 17 RSK Rose Garden RSK玫瑰園

Enjoy viewing flowers throughout the four seasons including roses 公園內有玫瑰等各種四季花卉，鮮花盛開景色優美。

- Access: About 5 minutes by taxi from JR Niwase Station
- Open: 9:30 - 17:00
- Admission: Adults ¥600, Children ¥300 ● Tel: 086-293-2121
- 交通：從JR庭瀨站乘計程車約5分鐘
- 開園時間：9:30~17:00
- 入場費：大人600日圓、孩子300日圓
- 電話：086-293-2121



Peak viewing time: Late April to early May  
觀賞時節：4月下旬~5月上旬

## 18 Lotus Flower Field in Kibiji 吉備路的紫雲英田地

In spring, the whole area around Biocchu Kokubunji Temple becomes pink with lotus flowers. 春天，備中國分寺四周，可見一片粉紅色的蓮花，非常美麗。

- Access: About 15 minutes by taxi from JR Soja Station, or about 8 minutes by car from Okayama Soja Interchange on the Okayama Expressway
- Admission: Free ● Tel: 0866-92-8277
- 交通：從JR總社站乘計程車約15分鐘，從岡山自動車道岡山總社IC開車約8分鐘 ● 入場費：免費
- 電話：0866-92-8277



Best seasons: March to April (field mustard), May (boppy), June to August (sunflower), October (cosmos)  
觀賞時節：菜花3月~4月、油菜花5月、向日葵6月~8月、大波斯菊10月

## 19 Roadside Station Kasaoka Bay Farm field of flowers 笠岡海濱農場道路休息站花田

Enjoy the seasonal variations of the fields of flowers as far as the eye can see. 一望無邊的花田，享受四季風光之情趣。

- Access: 10 minutes by taxi from JR Kasaoka Station
- Admission: Free
- Tel: 0865-69-2147
- 交通：從JR笠岡站乘計程車10分鐘
- 入場費：免費
- 電話：0865-69-2147

## 15 Tsuyama Cherry Blossom Festival 津山櫻花節

About 1,000 cherry trees bloom around Tsuyama Castle in Kakuzan Park. The park is lit up from sunset for fantastic night-time cherry blossom viewing. 津山城(鶴山公園)的「津山櫻花節」，約1,000棵櫻樹競相爭豔。一到晚上，園內燈光通明，欣賞夜光下的櫻花會使您情趣盎然，流連忘返。

- Access: About a 15 minute walk from JR Tsuyama Station
- Open: 7:30 - 22:00
- Admission: Adults (senior high school students and older) ¥300, Junior high school students and under admitted free of charge.
- Tel: 0868-22-3310 (Tsuyama City Tourist Agency)
- 交通：從JR津山站步行約15分鐘
- 開館時間：上午7點30分~下午10點
- 入場費：一般(高中生以上)300日圓、中學生以下免費
- 電話：0868-22-3310 (津山市觀光協會)

# Okayama Souvenirs 岡山的土特產



## Fruit desserts and sweets 水果甜點、糖果小零食

Desserts and sweets made with Okayama's sweet and fragrant fruits make the perfect souvenir for your travels... 使用岡山非常香甜之水果做成的甜點、糖果小零食，作為旅行土產品...

## Bizen Pottery 備前燒

Pottery famous for its rustic Japanese quality. Simple in shape and fired without being glazed or painted. 它的特色是不上釉，也不繪彩，樸素美觀，是日本最有名的傳統陶器之一。



## Masking Tape 美紋紙膠帶

A fashionable popular souvenir, created in a variety of delightful patterns 各種圖案花紋，漂亮的特產品很受歡迎。

## Kurashiki Hanpu 倉敷帆布包

A large range of items made of light and durable canvas are available. 使用輕量結實的帆布製成各種新穎模樣的產品。



## Kibi dango 吉備糰子

A representative souvenir of Okayama, which appears in the story of Momotaro. 在桃太郎傳說中出現過的岡山的有名土特產。

# Autumn Leaves in Okayama 岡山的紅葉



Peak viewing time: Early to late November  
觀賞時節：11月上旬~11月下旬

## 20 Former Shizutani School 舊閑谷學校

The oldest school for commoners in Japan. 日本最古老的國民學校。

- Access: About 10 minutes by taxi from JR Yoshinaga Station, or about 15 minutes by car from Bizen Interchange on the Sanyo Expressway
- Open: 9:00 - 17:00
- Admission: Adults ¥400, Elementary and junior high school students ¥100, 65 years old or older ¥200
- Tel: 0869-67-1436
- 交通：從JR吉永站乘計程車約10分鐘，從山陽自動車道備前IC開車約15分鐘
- 開館時間：9:00~17:00
- 入場費：大人400日圓、中小學生100日圓、65歲以上200日圓 ● 電話：0869-67-1436



Peak viewing time: Early November to mid-November  
觀賞時節：11月上旬~11月中旬

## 21 Okutsukei Valley 奧津溪

The largest formation of kettles (potholes) found in East Asia are in the Okutsukei Valley. 這裡有被稱為「東洋之最」的鍋穴。

- Access: Take the Chutetsu bus bound for "Okutsu Onsen" from JR Tsuyama Station, get off at "Obata" and walk about 10 minutes, or about 25 minutes by car from Imascho Interchange on the Chugoku Expressway
- Tel: 0868-54-2987 (Kagamino-cho, Industry and Tourist Section)
- 交通：從JR津山站乘前往奧津溫泉中鐵巴士在「小畑」下車步行約10分鐘，從中國自動車道莊莊IC開車約25分鐘 ● 電話：0868-54-2987 (鏡野町產業觀光課)



Peak viewing time: Late October to mid-November  
觀賞時節：10月下旬~11月中旬

## 22 Kanba-no-taki Falls 神庭瀑布

The best waterfalls in Western Japan, included in the 100 best scenic spots in Japan and Japan's top 100 waterfalls. 入選日本百景和日本瀑布百選，其規模是西日本之最的名瀑布。

- Access: About 10 minutes by taxi from JR Chugoku-Katsuyama Station, or about 25 minutes by car from Kuse Interchange on the Yonago Expressway
- Admission: Adults ¥300, children (elementary and junior high school students) ¥150
- Tel: 0867-42-1111
- 交通：從JR中國勝山站乘計程車約10分鐘，從米子自動車道久世IC開車約25分鐘 ● 入場費：大人300日圓、孩子(中小學生)150日圓 ● 電話：0867-42-1111



Peak viewing time: Mid-November  
觀賞時節：11月中旬

## 23 Ukankei Valley 宇甘溪

Beautiful autumn leaves viewed from this red bridge, the symbol of Ukankei Valley, are lit up during the peak viewing season. 在紅葉觀賞期，您可以在晚上從象徵性標誌的紅橋上觀賞被燈火照亮的紅葉，層林盡染。

- Access: About 20 minutes by taxi from JR Kanagawa Station, or about 30 minutes by car from Kayo Interchange on the Okayama Expressway
- Tel: 0866-54-1301 (Kibichuo Town Office, Collaboration Promotion Section)
- 交通：從JR金川站乘計程車約20分鐘，從岡山自動車道賀陽IC開車約30分鐘 ● 電話：0866-54-1301 (吉備中央町役場協働推進課)



Peak viewing time: Mid-November  
觀賞時節：11月中旬

## 24 Gokei Valley 豪溪

A representative scenic spot in Okayama Prefecture, known for its white rock surfaces and beautiful autumn leaves. 白色岩身和美麗紅葉構成的美景，是岡山縣具有代表性的名勝之地。

- Access: About 20 minutes by taxi from JR Gokei Station, or about 45 minutes by car from Okayama Soja Interchange on the Okayama Expressway
- Tel: 080-6345-9132 (Gokei Tourist Bureau)
- 交通：從JR豪溪站乘計程車約20分鐘，從岡山自動車道岡山總社IC開車約45分鐘 ● 電話：080-6345-9132 (豪溪觀光詢問處)

# Foods in Okayama 岡山的美食



## Sushi and Sashimi 壽司、生魚片

Sushi and sashimi made from fresh fish caught in the Seto Inland Sea are exquisite! 使用瀨戶內海的鮮魚做成的壽司、生魚片味道鮮美，令人叫絕！

## Chiya Beef 千屋牛

This beef is characterized by its moderate marbling and tender red meat. 其特徵是，霜降油花均勻和瘦肉鬆軟細密。



## Ebimeshi 蝦仁炒飯

Fried rice with shrimp, sauce, etc. 飯裡放入蝦仁等餡料用沙司味炒成的料理。

## Okayama barazushi 岡山什錦壽司

A type of chirashizushi (vinegared rice mixed with a variety of ingredients) that is representative of Okayama. With individually seasoned ingredients added on top of rice, Okayama barazushi is colorful and tasty.



每個壽司的餡料調味都不同，色香味美，是岡山有名的什錦壽司。



## Okayama Demi Katsudon 岡山沙司炸肉排蓋澆飯

A new taste different from regular katsudon (port cutlet bowl)! Okayama demi katsudon (pork cutlet bowl with demiglac sauce) has an irresistible taste that makes you want more. 與通常的炸肉排蓋澆飯不同，味道鮮美，吃過一次就會入迷。

## Local Specialty Dish 當地美食



## Kakioko 牡蠣煎菜餅

An abbreviated name for okonomiyaki (Japanese-style omelette or pancake) with oysters. Kakioko is fried in a special way, using a lot of oysters. 是放入牡蠣的菜餅之簡稱，使用多量牡蠣，採用獨自的煎烤方法做成的菜餅。



# Experience in Okayama

岡山的體驗



## 25 Plant Tour at Kirin Brewery Okayama Plant

麒麟啤酒岡山工廠 工廠參觀團

Experience the secrets of delicious beer!  
體驗美味可口的啤酒之秘密!

- Access: About a 10 minute walk from Mantomi Station on the JR Sanyo Line
- Tour time: About 70 minutes 10:00-15:00, Start time (Weekday) 10:00 11:00 12:00 13:00 14:00 15:00 (Weekend) 10:00 11:00 12:00 13:00 14:00 15:00
- Closed: Every Monday (or the following weekday if Monday is a holiday) and year-end and New Year holidays
- Tel: 086-953-2525
- 交通: 從JR山陽本線萬富站步行約10分鐘 ● 所需時間: 約70分鐘 10:00~15:00 開始時間 [平日] 10:00、11:00、12:00、13:00、14:00、15:00 [週末] 10:00、11:00、12:00、13:00、14:00、15:00
- 休息日/星期一(節假日時營業、第二天的平日休館)、年底年初休館 ● 電話/086-953-2525



## 26 Yamada Bee Farm, First Factory

山田養蜂場 第一工廠

Tour the new plant producing the largest share of royal jelly in Japan.  
參觀擁有日本最大市場的蜂皇漿製造工廠。

- Access: About 5 minutes by car from Innosho IC on the Chugoku Expressway
- Open: 9:00 - 17:00 (Plant tour 9:30 - 15:00) ● Tour time: About 50 minutes
- Closed: Thursdays, Saturdays, Sundays and holidays
- Tel: 0868-54-0066 (Overseas Division, Yamada Bee Farm)
- 交通/從中國自動車道院莊IC開車約5分鐘
- 開始時間/9:00~17:00 (參觀工廠為9:30~15:00)
- 遊覽所需時間/約50分鐘 ● 休息日/星期四、星期六、星期日、節假日
- 電話/山田養蜂場 海外事業部0868-54-0066

## Cycling 騎自行車周遊

### 27 Cycling on the Hiruzen Kogen Highlands 在蒜山高原騎自行車周遊

Enjoy cycling in a pleasant breeze of the highland.  
在高原爽風的吹拂下享受騎自行車周遊的樂趣。



- Access: Close to Hiruzen Interchange on the Yonago Expressway \*Not available in winter due to snowfall.
- Tel: 0867-66-3220 (Hiruzen Tourist Association)
- 交通/從米子自動車道蒜山IC下車就是
- 因冬季積雪不能利用
- 電話/0867-66-3220 (蒜山觀光協會)

### 28 Kibiji Bicycle Rental 吉備路租借自行車

Enjoy cycling while viewing relaxing scenery in Kibiji dotted with ancient ruins.  
騎著自行車觀賞隨處可見的古代遺跡之田園風光...



- Access: In front of JR Soja Station, Tel. 0866-92-0233
- In front of "Bicchu Kokubunji Temple," Tel. 0866-93-3421
- In front of JR Bizen-Ichinomiya Station, Tel. 086-284-2311
- Open: 9:00 - 18:00 ● Fee: One bike, maximum ¥1,000
- 交通/電話/JR總站前 0866-92-0233 備中國分寺前 0866-93-3421 JR備前一宮站前 086-284-2311 ● 營業時間/9:00~18:00 ● 費用/1輛、上限1,000日圓

## Snow Activities 滑雪活動

### 29 HIRUZEN KIDS SNOW PARK 蒜山兒童滑雪公園

A snow park for playing in the snow and sledding that even small children can enjoy.  
是一家小孩子們也可以享受玩滑雪、雪橇的專門滑雪公園。



- Access: About 10 minutes by car from Hiruzen IC on the Yonago Expressway ● Open: 10:00 - 16:00 \* Saturdays, Sundays and public holidays: 9:00 - 16:00 \* The opening period may vary depending on snow accumulation.
- Admission: 800yen ● Tel: 0867-66-2501 (Kyukamura Hiruzen-kogen)
- 交通/從米子自動車道蒜山IC開車約10分鐘 ● 營業時間/10:00~16:00 ※週六、週日、節假日為9:00~16:00 ※根據積雪狀況、營業時間會有變動。
- 費用/800日圓 ● 電話/0867-66-2501 (休暇村蒜山高原)

### 30 Onbara Kogen Ski Resort 恩原高原滑雪場

The closest panoramic ski slope to Okayama City.  
距離岡山市最近的全景滑雪場。

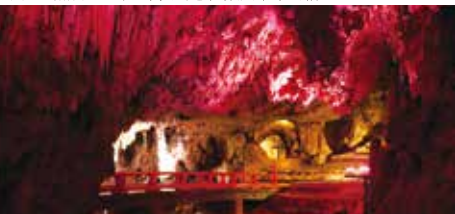


- Access: About 45 minute by car from Innosho Interchange on the Chugoku Expressway
- Open: 8:00 - 17:00
- Fee: Please contact the facility.
- Tel: 0868-44-2808
- 交通/從中國自動車道院莊IC開車約45分鐘
- 營業時間/8:00~17:00 ● 費用/有關費用請詢問設施。
- 電話/0868-44-2808

## Adventures 探險活動

### 31 Makido Cave 滿奇洞

Enjoy exploring a dream-like atmosphere as the entire cave is lit up with LED lights.  
使用LED照明燈,可以享受幻想性氛圍帶來的愉悅。



- Access: About 15 minutes by car from Hokubo Interchange on the Chugoku Expressway
- Open: 8:30 - 17:00 (Last entry 16:30)
- Admission: Senior high school students and older ¥1,000, Junior high school students ¥800, Elementary school students ¥500
- Tel: 0867-74-3100 (Makido Management Office)
- 交通/從中國自動車道北房IC開車約15分鐘 ● 營業時間/8:30~17:00 (受理截止至16:30) ● 入場費/高中生以上1000日圓、中學生800日圓、小學生500日圓 ● 電話/0867-74-3100 (滿奇洞管理事務所)

### 32 Ikurado Cave 井倉洞

A large scale limestone cave, with a total length of 1,200m and a height difference of 90m.  
全長1200m、高低差90m的大型鐘乳洞。



- Access: About a 15 minute walk from Ikura Station on the JR Hakubi Line
- Open: 8:30 - 17:00 (Last entry 16:30) ● Admission: Senior high school students and older ¥1,000, Junior high school students ¥800, Elementary school students ¥500 ● Tel: 0867-75-2224
- 交通/從JR備前線井倉站步行約15分鐘 ● 營業時間/8:30~17:00 (受理截止至16:30) ● 入場費/高中生以上1000日圓、中學生800日圓、小學生500日圓 ● 電話/0867-75-2224

## Art 藝術

Enjoy artistic islands of the Seto Island Sea and the variety of artwork made by traditional techniques.  
在瀨戶內海的藝術諸島,可以欣賞用傳統技術製做的多數藝術作品。

### 33 Naoshima Island (Kagawa Prefecture) 直島 (香川縣)



Experience art across the entire island.  
在島上體驗藝術之美。

- Access: About a 5 minute walk from JR Uno Station to Uno Port and about 20 minutes by ferry from Uno Port
- Ferry fare: Adults ¥300, Children ¥150
- "Red Pumpkin" © Yayoi Kusama 2006 Naoshima Miyaura Port Square Photo/Daisuke Aochi 草間彌生「紅南瓜」2006年 直島·宮浦港綠地 照片/青地 大輔

- 交通/從JR宇野站步行約5分鐘,在宇野港乘渡輪約20分鐘
- 費用/大人300日圓、孩子150日圓(渡輪費)

### 34 Inujima Island 犬島



A refinery comes back to life as an art museum.  
將精煉廠改建成的美術館。

- Access: About 45 minutes by bus from JR Okayama Station to Hoden Port and about 10 minutes by passenger boat from Hoden Port
- Tel: 086-803-1332 (Okayama City, Convention Promotion Section)

- 交通/從JR岡山站乘巴士約45分鐘,在寶傳港乘渡輪約10分鐘
- 電話/086-803-1332 (岡山市觀光會議推廣課)

Inujima Seirensho Art Museum Photo: Daici Aino 犬島精煉所美術館 照片:阿野太一

### 35 Bizen Pottery Making Experience 備前燒揉泥製陶體驗

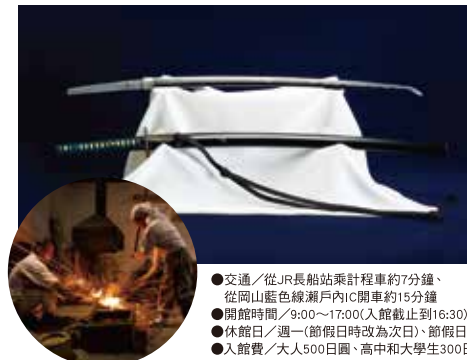


Experience clay kneading and pottery making (Tsuchi Hineri) (Bizen pottery) in Bizen Pottery Traditional Industry Hall.  
在備前燒傳統產業會館,可以參加揉泥製陶(備前燒)體驗。

- Access: Directly linked to JR Imbe Station ● Experience times are available on Saturdays, Sundays and public holidays 10:00 - 15:00 ● Closed: Tuesdays ● Admission: Electric kiln 3,300yen (600g), Climbing kiln 3,850yen (600g) \* Reservation required (available on the day) \* The experience time is about one hour. ● Tel: 0869-64-1001 (Okayama-ken bizenyaki touyukai)

- 交通/與JR伊部站直接連接 ● 可體驗日/週六、週日、節假日 10:00~15:00
- 定休日/週二 ● 費用/電窯3,300日圓(600g) 登窯3,850日圓(600g) ※需要預約(當天可) ※體驗時間約1小時
- 電話/0869-64-1001(岡山縣備前燒陶友會)

### 36 Bizen Osafune Sword Museum 備前長船刀劍博物館



This Japanese sword museum, a rarity in Japan, showcases the swords of the samurai.  
日本國內也很少見的日本刀博物館。

- Access: About 7 minutes by taxi from JR Osafune Station About 15 minutes from Okayama Blue Line Setouchi IC
- Open: 9:00 - 17:00 (Admission until 16:30) ● Closed: Mondays (or the following day if Monday is a holiday, on the following day of a public holiday and at the time of an exhibition change)
- Admission: Adult 500yen, High school and college students 300yen \* Admission fees for special exhibitions are separately required. ● Tel: 0869-66-7767

- 交通/從JR長船站乘計程車約7分鐘,從岡山藍色線瀨戶內IC開車約15分鐘
- 開館時間/9:00~17:00(入館截止至16:30)
- 休館日/週一(節假日時改為次日、節假日的次日、換展時)
- 入館費/大人500日圓、高中和大學300日圓 ※特別展時需要另付費
- 電話/0869-66-7767

## Other 其他



### 37 Bicchū Matsuyama Castle A Castle in the Sky 天空之山城 箇中松山城

Visit the Bicchū Matsuyama Castle that floats in the sky.  
窺賞浮現在天空的箇中松山城景觀。

- Access: About 15 minutes by car from Bicchū-Takahashi Station on the JR Hakubi Line and about a 20-minute walk, or about 30 minutes by car from Kayo Interchange on the Okayama Expressway
- Admission: Adults ¥500, Children ¥200 ● Tel: 0866-21-0461
- View the "Sea of Clouds": About 7:30 - 8:00
- 交通/從JR備前線備中高梁站開車約15分鐘、下車步行約20分鐘,從岡山自動車道寶賀IC開車約30分鐘
- 費用/大人500日圓、孩子200日圓 ● 電話/0866-21-0461
- 可以看到雲海的時間段 早晨7:30~8:00左右



### 38 Manekineko Art Museum 招財貓美術館

Make your own manekineko (Lucky Cat) through a hands-on painting experience.  
體驗上畫,動手製作自己的招財貓。

- Access: About 10 minutes by car from Bizen-hara Station, about 20 minutes by car from Sanyo Interchange on the Sanyo Expressway, or about 30 minutes from Okayama Interchange.
- Open: 10:00 - 17:00 (Last entry 16:30) ● Closed: Wednesdays, Year-end holiday (closed during New Year holiday, national holidays, Obon holiday) ● Admission: Adults ¥600, Children ¥300, Hands-on painting experience ¥1,500 (including admission fee, final entry 16:00) ● Required time: About 1 hour (Reservations available) ● Tel: 086-228-3301
- 交通/從JR備前線備前原站開車約10分鐘,從山陽自動車道山陽IC開車約20分鐘,從岡山IC開車約30分鐘 ● 營業時間/10:00~17:00(入館截止至16:30) ● 休息日/星期三、年底(正月、節假日、五重盆節閉館) ● 入館費/一般600日圓、孩子300日圓、體驗費1,500日圓 [入館費、最終受理截止至16:00] ● 所需時間/約1小時[可事先預約] ● 電話/086-228-3301

### 39 Saijo Inari Shrine's Ennomasha Miniature Shrines, where you can end a bad relationship and find a good relationship at the same time 可以一次祭拜良緣和緣切之神,在殿上祈禱緣之末結緣緣事件



Saijo Inari Shrine is one of three major Inari Shrines (shrine that worships the God Inari) with 1,200 years of tradition.  
擁有約1,200年傳統的日本三大稻荷。

- Access: About 10 minutes by car from Okayama Soja Interchange on the Okayama Expressway
- Admission: One person ¥900 or more (Ema (a pictorial offering) dedication: ¥300 for ending a bad relationship and ¥600 for finding a good relationship)
- Tel: 086-287-3701

- 交通/從岡山自動車道岡山總社IC開車約10分鐘
- 參拜費/每人900日圓以上(緣切緣奉納費300日圓、良緣繪馬奉納費600日圓) ● 電話/086-287-3701

### 40 Fukiya Furusato Village 吹屋故鄉村

Beautiful streets of houses with red roof tiles painted by high-class specialty paint "colcothar."  
使用特產的高級塗料「弁柄」塗染的紅色屋頂的建築比比皆是,整個街道顯得非常美麗。

- Access: About 50 minutes by car from Kayo Interchange on the Okayama Expressway About 60 minutes by bus from JR Bicchū-Takahashi Station
- 交通/從岡山自動車道寶賀IC開車約50分鐘 從JR備前高梁站乘巴士約60分鐘

### 41 Historical town "Yakage" 讓人感受歷史氣息之的「矢掛」

The beautiful townscape of a post station that flourished as a resting stop for daimyo (feudal lord) remains today.  
宿場町曾作為大名(領主)的下榻旅館而繁榮,現在依然保留著當時的美麗街道之風情。

- Access: About a 10 minute walk from Yakage Station on the Ibara Line, Ibara Railway, about 20 minutes by car from Kamogata IC on the Sanyo Expressway
- Tel: 0866-82-1016 (Yakage Town Hall Industrial Tourism Division)
- 交通/從井原鐵道井原線矢掛站步行約10分鐘,從山陽自動車道備前IC開車約20分鐘
- 電話/0866-82-1016 (矢掛町役所產業觀光課)



JR-WEST RAIL PASS JR西日本鐵路周遊券



Get unlimited rides in Okayama, Takamatsu, Kinokuniya, Amanohashidate, Tottori, Kishi, Shirahama and Kii-Katsuura, in addition to the Kansai area!  
除關西地區外，岡山・高松・城崎溫泉・天橋立・鳥取・貴志・白濱・紀伊勝浦也可無限次數搭乘！

Get unlimited rides in Hiroshima, Okayama, Takamatsu, Kinokuniya, Amanohashidate, Tottori, Kishi, Shirahama and Kii-Katsuura in addition to the Kansai area!  
除關西地區外，廣島・岡山・高松・城崎溫泉・天橋立・鳥取・貴志・白濱・紀伊勝浦也可無限次數搭乘！

Get unlimited rides in Sanyo (Okayama, Hiroshima, Yamaguchi) and San'in (Tottori, Shimane), in addition to the Kansai Area!  
除關西地區外，山陽(岡山、廣島、山口)、山陰(鳥取、島根)也可無限次數搭乘！

Get unlimited rides in San'in (Tottori, Shimane, Hagi) and Okayama!  
山陰(鳥取、島根、萩)及岡山可無限次數搭乘！

Travel extensively in the Setouchi area! Including bus and ferry in area!  
可廣域周遊瀬戶內地區！巴士和船之搭乘也通用！

Get unlimited rides from Hakata to Yamaguchi, Hiroshima, Okayama and Takamatsu!  
從博多至山口、廣島、岡山、高松可無限次數搭乘！

**Kansai WIDE Area Pass**  
5-day Unlimited ride  
Purchasing abroad: ¥9,200 (Children ¥4,600)  
Purchasing in Japan: ¥10,200 (Children ¥5,100)

**Kansai-Hiroshima Area Pass**  
5-day Unlimited ride  
Purchasing abroad: ¥13,700 (Children ¥6,850)  
Purchasing in Japan: ¥14,700 (Children ¥7,350)

**Osaka-Hakata 'Sanyo-San'in Area Pass'**  
7-day Unlimited ride  
Purchasing abroad: ¥19,400 (Children ¥9,700)  
Purchasing in Japan: ¥20,400 (Children ¥10,200)

**San'in-Okayama Area Pass**  
4-day Unlimited ride  
Purchasing abroad: ¥4,580 (Children ¥2,290)  
Purchasing in Japan: ¥5,600 (Children ¥2,800)

**Osaka-Hakata 'Setouchi Area Pass'**  
5-day Unlimited ride  
Purchasing abroad: ¥17,310 (Children ¥8,650)  
Purchasing in Japan: ¥18,330 (Children ¥9,160)

**Okayama-Hiroshima-Yamaguchi Area Pass**  
5-day Unlimited ride  
Purchasing abroad: ¥13,700 (Children ¥6,850)  
Purchasing in Japan: ¥14,700 (Children ¥7,350)

**關西廣域鐵路周遊券**  
5天內 無限制搭乘  
於日本國外購買時: 9,200日元 (孩子 4,600日元)  
於日本國內購買時: 10,200日元 (孩子 5,100日元)

**關西&廣島地區鐵路周遊券**  
5天內 無限制搭乘  
於日本國外購買時: 13,700日元 (孩子 6,850日元)  
於日本國內購買時: 14,700日元 (孩子 7,350日元)

**大阪、博多「山陽&山陰地區鐵路周遊券」**  
7天內 無限制搭乘  
於日本國外購買時: 19,400日元 (孩子 9,700日元)  
於日本國內購買時: 20,400日元 (孩子 10,200日元)

**山陰&岡山地區鐵路周遊券**  
4天內 無限制搭乘  
於日本國外購買時: 4,580日元 (孩子 2,290日元)  
於日本國內購買時: 5,600日元 (孩子 2,800日元)

**大阪、博多「瀬戶內地區鐵路周遊券」**  
5天內 無限制搭乘  
於日本國外購買時: 17,310日元 (孩子 8,650日元)  
於日本國內購買時: 18,330日元 (孩子 9,160日元)

**岡山&廣島&山口地區鐵路周遊券**  
5天內 無限制搭乘  
於日本國外購買時: 13,700日元 (孩子 6,850日元)  
於日本國內購買時: 14,700日元 (孩子 7,350日元)



Accommodation Information 住宿設施信息



- 12 Okayama International Hotel** 岡山國際酒店  
☎086-273-7311  
4-1-16 Kadota Honmachi, Naka-ku, Okayama City, Okayama  
岡山縣岡山市中區門田本町4-1-16  
☎About 15 minutes by taxi from JR Okayama Station  
從JR岡山站乘計程車約15分鐘
- 13 Okayama City Hotel Koseicho** 岡山市飯店 厚生町  
☎086-236-1000  
3-1-20 Kousei-cho, Kita-ku, Okayama City, Okayama  
岡山縣岡山市北區厚生町3-1-20  
☎About 10 minutes by taxi from JR Okayama Station, or about 20 minutes by car from Okayama Interchange on the Sanyo Expressway  
從JR岡山站乘計程車約10分鐘・從山陽自動車道岡山IC開車約20分鐘
- 14 ANA Crowne Plaza Hotel Okayama** 全日空皇冠廣場酒店岡山  
☎086-898-1111  
15-1 Ekimotomachi, Kita-ku, Okayama City, Okayama  
岡山縣岡山市北區站元町15-1  
☎About a 1 minute walk from JR Okayama Station  
從JR岡山站步行約1分鐘
- 15 Okayama Plaza Hotel** 岡山plaza酒店  
☎086-272-1201  
2-3-12 Hama, Naka-ku, Okayama City, Okayama  
岡山縣岡山市中區濱2-3-12  
☎About a 10 minute walk from JR Nishigawara Station  
從JR西川原站步行約10分鐘
- 16 Koraku Hotel** 後樂酒店  
☎086-221-7111  
5-1 Heiwa-cho, Kita-ku, Okayama City, Okayama  
岡山縣岡山市北區平和町5-1  
☎About a 5 minute walk from JR Okayama Station  
從JR岡山站步行約5分鐘
- 17 Comfort Hotel Okayama** Comfor酒店岡山  
☎086-801-9411  
1-1-13 Marunouchi, Kita-ku, Okayama City, Okayama  
岡山縣岡山市北區丸之內1-1-13  
☎About a 15 minute walk from JR Okayama Station  
從JR岡山站步行約15分鐘
- 18 Daiwa Roynet Hotel** 大和ROYNET酒店  
☎086-803-0055  
1-1-1, Ekimae-cho, Kita-ku, Okayama City, Okayama  
岡山縣岡山市北區站前町1-1-1  
☎About a 1 minute walk from JR Okayama Station  
從JR岡山站步行約1分鐘
- 19 Hotel Granvia Okayama** 岡山格蘭比亞酒店  
☎086-234-7000  
1-5 Ekimotomachi, Kita-ku, Okayama City, Okayama  
岡山縣岡山市北區站元町1-5  
☎Directly linked to JR Okayama Station (about a 3 minute walk).  
直接與JR岡山站連接(步行約3分鐘)
- 20 Yuba Onsen Haku-Un-Kaku** 湯迫溫泉 白雲閣  
☎086-279-0545  
644 Yuba, Naka-ku, Okayama City, Okayama  
岡山縣岡山市中區湯迫644  
☎About 15 minutes by taxi from JR Okayama Station  
從JR岡山站乘計程車約15分鐘
- 21 Diamond Setouchi Marine Hotel** 鑽石瀬戶內海濱酒店  
☎0863-81-2111  
2-12-1 Shibukawa, Tamano City, Okayama  
岡山縣玉野市澗川2-12-1  
☎About 20 minutes by taxi from JR Kojima Station \*Pick-up service is available. Reservations required.  
從JR兒島站乘計程車約20分鐘 \*可接送: 需要預約
- 22 Hotel Limani** 酒店利馬尼  
☎0869-34-5500  
3900 Ushimado, Ushimado-cho, Setouchi City, Okayama  
岡山縣瀬戶內市牛窗町牛窗3900  
☎About 20 minutes by taxi from JR Oku Station \*Pick-up service is available. Reservations required. About 15 minutes by car from Oku Interchange on the Okayama Blue Line  
從JR邑久站乘計程車約20分鐘 \*可接送: 需要預約・從岡山藍線道邑久IC開車約15分鐘
- 23 Kurashiki Ivy Square** 倉敷IVY SQUARE  
☎086-422-0012  
7-2 Honmachi, Kurashiki City, Okayama  
岡山縣倉敷市本町7-2  
☎About a 10 minute walk from JR Kurashiki Station  
從JR倉敷站步行約10分鐘
- 24 Kurashiki International Hotel** 倉敷國際酒店  
☎086-422-5141  
1-1-44 Chuo, Kurashiki City, Okayama  
岡山縣倉敷市中央1-1-44  
☎About a 10 minute walk from JR Kurashiki Station  
從JR倉敷站步行約10分鐘
- 25 Kurashiki Station Hotel** 倉敷站飯店  
☎086-425-2525  
2-8-1 Achi, Kurashiki City, Okayama  
岡山縣倉敷市阿知2-8-1  
☎About a 3 minute walk from JR Kurashiki Station  
從JR倉敷站步行約3分鐘
- 26 Kurashiki Setouchi Kojima Hotel** 倉敷瀬戶內兒島酒店  
☎086-473-7711  
303-53 Shimotsui Fukiage, Kurashiki City, Okayama  
岡山縣倉敷市下津井吹上303-53  
☎About 8 minutes by taxi from JR Kojima Station  
從JR兒島站乘計程車約8分鐘
- 27 Washuzan Shimoden Hotel** 鷺羽山下電酒店  
☎086-479-7111  
1666-2 Obatake, Kurashiki City, Okayama  
岡山縣倉敷市大畠1666-2  
☎About 10 minutes by taxi from JR Kojima Station \*Pick-up service is available at JR Kojima Station. (Reservations required)  
從JR兒島站乘計程車約10分鐘 \*可接送: 從JR兒島站(需要預約)
- 28 WASHU BLUE RESORT Kasago** WASHU BLUE RESORT 風籠  
☎086-479-9500  
303-17 Shimotsui Fukiage, Kurashiki City, Okayama  
岡山縣倉敷市下津井吹上303-17  
☎About 10 minutes by taxi from JR Kojima Station \*Pick-up service is available. (Reservations required)  
從JR兒島站乘計程車約10分鐘 \*可接送: 從JR兒島站(需要預約)
- 29 Kurashiki Seaside Hotel** 倉敷海濱飯店  
☎086-475-1616  
2767-21 Kojima Shionasu, Kurashiki City, Okayama  
岡山縣倉敷市兒島鹽生2767-21  
☎About 10 minutes by car from JR Kojima Station  
從JR兒島站開車約10分鐘
- 30 Suntopia Okayama Soja** Suntopia 岡山總社  
☎0866-95-8811  
1215 Hada, Soja City, Okayama  
岡山縣總社市泰1215  
☎About 10 minutes by taxi from JR Soja Station, or about 20 minutes by car from Okayama Soja Interchange on the Okayama Expressway  
從JR總社站乘計程車約10分鐘・從岡山自動車道岡山總社IC開車約20分鐘
- 31 Takahashi International Hotel** 高梁國際飯店  
☎0866-21-0080  
2033 Masamune-cho, Takahashi City, Okayama  
岡山縣高梁市正宗町2033  
☎About a 3 minute walk from JR Bitchu-Takahashi Station  
從JR備前高梁站步行約3分鐘
- 32 Shingo Onsen Hotspring** 神郷溫泉  
☎0867-93-5106  
3188-1, Shingo-Takase, Niimi City  
新見市神郷高嶺3188-1  
☎About 30 minutes by car from Niimi IC  
從新見IC開車約30分鐘
- 33 Ryokan Okutsuso, Okutsu Onsen** 名泉鍵湯 奧津莊  
☎0868-52-0021  
48 Okutsu, Kagamino-cho, Tomada-gun, Okayama  
岡山縣吉田郡鏡野町奧津48  
☎About 60 minutes by bus from JR Tsuyama Station, or about 25 minutes by car from Innocho Interchange on the Chugoku Expressway  
從JR津山站乘巴士約60分鐘・從中國自動車道院莊IC開車約25分鐘
- 34 Maniwa Riverside Hotel** 真庭河畔酒店  
☎0867-52-1521  
620 Kaide, Maniwa City, Okayama  
岡山縣真庭市開田620  
☎About 2 minutes by taxi from JR Komi Station, or about 2 minutes by car from Ochiai Interchange on the Chugoku Expressway  
從JR古見站乘計程車約2分鐘・從中國自動車道落合IC開車約2分鐘
- 35 Yubara Kokusai Kanko Hotel Kikunoyu** 湯原國際觀光酒店 菊之湯  
☎0867-62-2111  
16 Yubara Onsen, Maniwa City, Okayama  
岡山縣真庭市湯原溫泉16  
☎About 35 minutes by bus from JR Chugoku Katsuyama Station and about a 5 minute walk, or about 10 minutes by car from Yubara Interchange on the Yonago Expressway  
從JR中國勝山站乘巴士約35分鐘・然後步行約5分鐘・從米子自動車道湯原IC開車約10分鐘
- 36 Kifu-no-sato** 季譜之郷  
☎0868-72-1523  
180 Yunogo, Mimasaka City, Okayama  
岡山縣美作市湯郷180  
☎About 10 minutes by taxi from JR Hayashino Station \*Pick-up service is available. Reservations required. About 10 minutes by car from Mimasaka Interchange on the Chugoku Expressway  
從JR林野站乘計程車約10分鐘 \*可接送: 需要預約・從中國自動車道美作IC開車約10分鐘
- 37 Yunogo Grand Hotel** 湯郷大酒店  
☎0868-72-0395  
581-2 Yunogo, Mimasaka City, Okayama  
岡山縣美作市湯郷581-2  
☎About 6 minutes by taxi from JR Hayashino Station, or about 10 minutes by car from Mimasaka Interchange on the Chugoku Expressway  
從JR林野站乘計程車約6分鐘・從中國自動車道美作IC開車約10分鐘
- 38 Poppy Springs Resort & Spa** 罌粟溫泉度假村  
☎0868-72-7575  
538-1 Yunogo, Mimasaka City, Okayama  
岡山縣美作市湯郷538-1  
☎About 8 minutes by taxi from JR Hayashino Station, or about 10 minutes by car from Mimasaka Interchange on the Chugoku Expressway  
從JR林野站乘計程車約8分鐘・從中國自動車道美作IC開車約10分鐘